

INDIAN SILVERBILL *Lonchura malabarica*. R. Occasional. Open areas.
 SCALY-BREASTED MUNIA *Lonchura punctulata*. R. B. Fairly common. Open woods and fields; common during monsoon.
 YELLOW-BREASTED GREENFINCH *Carduelis spinoides*. W. Occasional. Open fields and cultivation.
 EUROPEAN GOLDFINCH *Carduelis carduelis*. W. Rare. Open areas.
 COMMON ROSEFINCH *Carpodacus erythrinus*. P. Rare in autumn but abundant in spring passage specially on wheat fields.
 CRESTED BUNTING *Melophus lathami*. W. Very rare. Tons valley.
 ROCK BUNTING *Emberiza cia*. V. Sighting of two birds on 4 January 1954.
 WHITE-CAPPED BUNTING *Emberiza stewarti*. W. Occasional in the Tons valley scrub jungle, rare in other open areas.
 CHESTNUT-EARED BUNTING *Emberiza fucata*. W. Rare. Tons valley.
 BLACK-HEADED BUNTING *Emberiza melanocephala*. V. Two sightings of small flocks on 22 April 1946 and 2 May 1951 on open ground.

REFERENCES

- Ali, S. and Ripley, S. D. (1983) *Handbook of birds of India and Pakistan. Compact Edition. Oxford University Press.*
 George, J. (1957) Birds of New Forest. *Indian Forester* 83: 674-737.
 George, J. (1962) Birds of New Forest: 1957-1962. *Indian Forester* 88: 442-442.
 Mohan, D. (1993) Birds of New Forest: new additions. *Indian Forester* 119: 498-503.
 Mohan, D. and Chellam, R. (1990) New call record of Greenbreasted Pitta *Pitta sordida* in Dehra Dun, Uttar Pradesh. *J. Bombay Nat. Hist. Soc.* 87: 453.
 Osmaston, B. B. (1935) Birds of Dehra Dun and adjacent hills. *I.M.A. Journal., Suppl.*
 Wright, M. D. (1949) A bird count in Dehra Dun. *J. Bombay Nat. Hist. Soc.* 48: 570-572.
 Wright, M. D. (1955) Notes on the birds of a selected area of Dehra Dun: June, 1946 to December, 1950. *J. Bombay Nat. Hist. Soc.* 54: 627-662.

Dhananjai Mohan, Indian Forest Service, 28, Trevor Road, New Forest, Dehra Dun, 248006, INDIA.

Report on an ornithological visit to Buxa Tiger Reserve, West Bengal, India, 17 February to 6 March 1992

DESMOND ALLEN, JOHN ANDERTON and KRYS
KAZMIERCZAK

A visit, in 1992, to Buxa Tiger Reserve, in an ornithologically rich area in north-east India, produced a total of 227 species, including two globally threatened and five near-threatened. Previous significant records are discussed, and a complete annotated species list is given.

The eastern Himalaya, stretching eastward from the Arun-Kosi valley of Nepal, is an important area of regional endemism, and has been designated by BirdLife International as Endemic Bird Area (EBA) DO8. The larger eastern part of this EBA lies within Arunachal Pradesh and Myanmar and is not open for unrestricted scientific exploration. The more accessible areas, for instance eastern Nepal, have suffered serious loss of lower montane forest, resulting in the local extinction of many species (Inskipp 1989). It is a vast area and the distribution, status and movements of many rare and/or threatened species remain little known.

West Bengal is the furthest east along the Himalaya that can be visited with relative ease and so, following a period of three months studying birds in Nepal, we looked for forested submontane/montane areas in this state. The Singgalilla Hills, Darjeeling district were too wet and cloudy in early February so we moved down to Buxa Tiger Reserve in Jalpaiguri District.

BUXA TIGER RESERVE

Buxa Tiger Reserve lies in the north-east corner of West Bengal between 26°30'N and 26°48'N and between 89°25'E and 89°55'E, enclosing 759 km². It is bounded to the north by Bhutan, to the east by the river Sankosh and Assam, and to the west by the river Pana; the southern boundary follows what remains of the forest. It is dissected by braids of rivers which rise to the north and flow south (see Fig. 1). The altitude at the border of the reserve reaches 2,000 m, but the majority of the reserve lies at plains level, sloping from c. 160 m at the base of the foothills to c. 60 m towards Alipurduar. The forest is largely Sal *Shorea robusta*, with many huge emergents. It is divided into blocks, some of which appear to be almost virgin, though there are many teak plantations and also village settlements. The surrounding areas to the south and west have mostly been cleared for cultivation or tea gardens. The

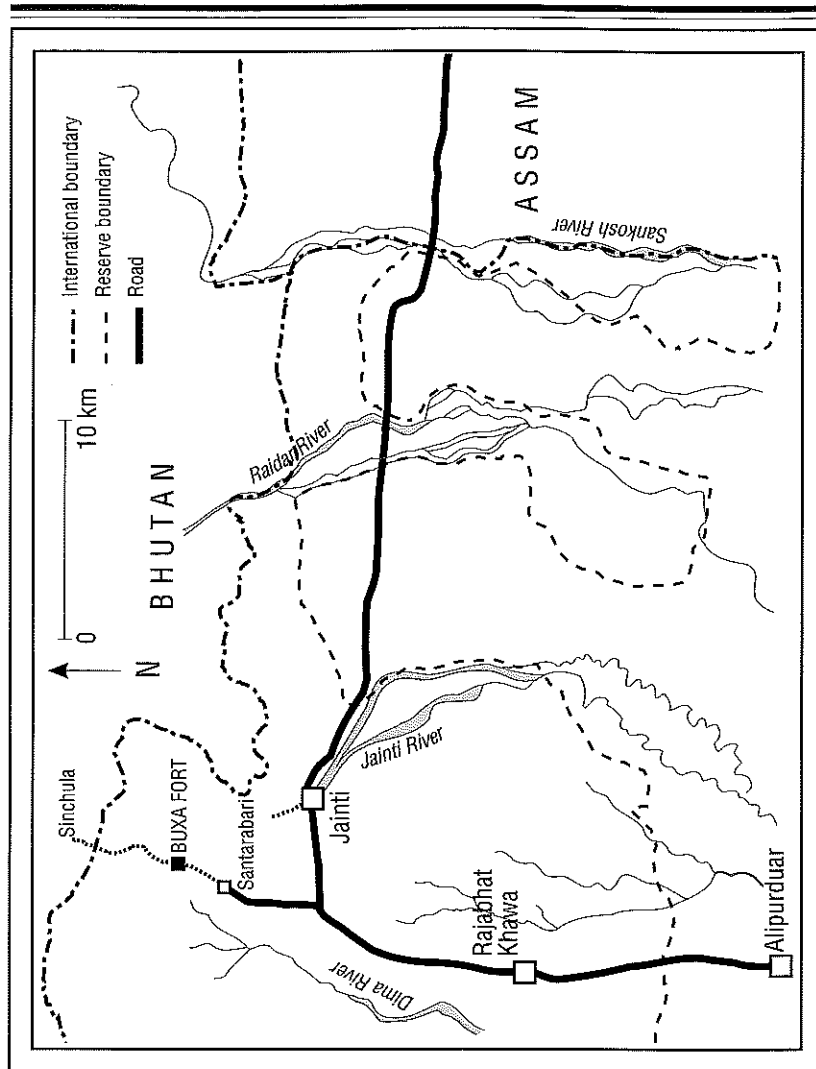


Figure 1. Map of Buxa Tiger Reserve

Tiger *Panthera tigris* population of the reserve was estimated to be 25-30 at that time, but it is considered to be an essential corridor for Tigers and Asian Elephants *Elephas maximus* moving between the forests of north-west Assam and southern Bhutan (Rodgers and Panwar 1988).

Administratively the reserve has been under the jurisdiction of the Forest Department since 1866; it has been part of Project Tiger since 1983, and has

been managed by them since 1993. The area is divided into 'ranges' run by Range Officers, who supervise Beat Officers, who patrol subdivisions known as 'beats'. The headquarters are in Jalpaiguri.

We visited two ranges: Jaunti and Buxa.

JAINTI RANGE

Jaunti range is on the northern edge of the plains and extends south from the edge of the Buxa duars or foothills. The headquarters are at the small settlement of Jaunti. Tigers were still present in this lowland forest area, which is probably typical of the reserve, both in its habitats and its avifauna. We surveyed a small part of this area on 17, 18 and 20 February.

BUXA RANGE

The northern edge of this range follows the Bhutanese border, enclosing what perhaps may now be a unique habitat range in this part of India: continuous forest from the plains to nearly 2,000 m at the border, and forest cover probably continues at least to Tale La (4,066 m) in Bhutan. While almost all of the north-eastern border of West Bengal runs along the bottom of the foothills, here it penetrates well up to the Bhutanese plateau. From the border ridge at 1,700-1,925 m the forest descends very steeply so there are few large trees here. In places, owing to periodic landslips, some steep slopes are dominated by bamboo. Continuing south, the topography becomes gentler, and small settlements of hill farmers are encroaching, usually where they are not visible from the main paths. Trees reach 20-25 m in places, but most of the valley bottoms and ridges have been cleared for agriculture or shifting cultivation, and many other areas of forest have had the understorey removed to encourage pasture for grazing animals.

The main village of Buxa lies in the centre of the range at 870 m, by the ruins of a former British fort (Fig. 1). There are some small shops, a Forest Rest House and other accommodation. It is reached by about 1½ hours walk from Santarabari (230 m), where the range HQ is located, and where the road north from Jalpaiguri ends. The path is well used by locals and winds up through the scarp to the border at the Sinchu Pass and the Bhutanese village of Sinchula beyond. This path was particularly good for birds, with many interesting species being recorded between the viewpoint (1,500 m) and the pass (1,900 m).

We surveyed the area as a team on 19, 21-25 February and D.A. stayed until 6 March.

ORNITHOLOGICAL IMPORTANCE OF THE AREA

There is little previously published information for the area, but Inglis *et al.* (1920) summarized the vertebrates recorded in Jalpaiguri District, and mentioned the Buxa Duars frequently. Inglis (1952-1969) provided details of a few extra species from the Buxa area. Stevens (1923-1925) visited Bhotan Ghat on the Raidak river in January 1922 and noted a number of species. There is a printed list of the 'Avifauna - Buxa Tiger Reserve' (Anon. undated), comprising 213 species, which we were kindly given by the Jainti Beat Officer. We found many apparently previously unrecorded species - mostly from the higher elevations. In nine days we recorded nearly 200 species of birds, and the final total was 227, of which 130 do not appear on the reserve list, and 50 of these latter species are not mentioned by Inglis *et al.* (1920), Stevens (1923-1925) or Inglis (1952-59). Seven additional species were recorded by R. Singh (pers. comm.), one by Law (1953) and one by Sanyal (1995) giving a total of 359 species for the area (Appendix). Species listed by Inglis *et al.* (1920) for Jalpaiguri District are included in the Appendix with indications of status where these were given.

SELECTED SPECIES OF INTEREST

Threat categories are from Collar *et al.* (1994).

CHESTNUT-BREADED PARTRIDGE *Arborophila mandellii* (VU) A group of partridges seen briefly on four occasions near the viewpoint, appeared to show a white crescent on the breast and were probably referable to this species. Inglis *et al.* (1920) noted that 'specimens have been obtained in the Bhutan duars in April, probably in this district, though we have been unable to get it.'

RUFIOUS-NECKED HORNBILL *Aceros nipalensis* (VU) One pair was seen above the fort at c. 1,000 m. Inglis *et al.* (1920) record a specimen which had been purchased live at Buxa by Mr J. R. Phillips in 1918. It was listed by Anon. (undated).

BEAUTIFUL NUTHATCH *Sitta formosa* (VU) Two (- four) birds were seen near the ridge at 1,400 m, feeding 3-6 m from the ground on large trees (15+ m), and loosely associated with White-browed Scimitar Babblers, Lesser Yellownapes and Lesser Racket-tailed Drongos. A soft contact call: 'whuck' or 'whit' was noted.

LONG-BILLED WREN BABBLER *Rimator malacoptilus* (LR: nt) A pair was seen at c. 1,500 m (J.A.). Inglis *et al.* (1920) noted that 'O'Donel met with a pair at about 4000 ft.', and Inglis (1952-1969) added that this was 'above Baksa Duar.'

BLACK-HEADED SHRIKE BABBLER *Pteruthius rufiventer* (LR: nt) Small numbers were seen regularly, usually with mixed babbler flocks.

YELLOW-THROATED FULVETTA *Alcippe cinerea* (LR: nt) A small party was seen once at c. 1,500 m (J.A.).

WHITE-NAPED YUHINA *Yuhina bakeri* (LR: nt) Small flocks of 6-12 were seen regularly at 1,500-1,600 m. The call was a titter with a final jeer.

GREATER RUFIOUS-HEADED PARROTBILL *Paradoxornis ruficeps* (LR: nt) Flocks of 30+ were seen regularly in bamboo at 800-1,200 m, usually in association with Coral-billed Scimitar-Babblers. Inglis (1952-1969) recorded a small party at Buxa on 3 December 1918.

PREVIOUS SIGNIFICANT RECORDS

SWAMP FRANCOLIN *Francolinus gularis* (VU) Inglis *et al.* (1920) noted that it was 'getting scarce as suitable localities decrease' in Jalpaiguri district, but Anon. (undated) listed it as still occurring in Buxa.

MANIPUR BUSH QUAIL *Perdicula manipurensis* (VU) 'The type specimens were procured in Goalpara. Primrose has seen this bird not far from the Torsa, and Shebbeare also believes he has seen it. There is a ragged skin in the British Museum said to have been got in the Bhutan Duars. This is evidently the bird mentioned by Thornhill as shot by him at Alipurduar' (Inglis *et al.* 1920).

SPOT-BELLIED EAGLE OWL *Bubo nipalensis* (LR: nt) Inglis *et al.* (1920) stated '...not often seen.' Listed by Anon. (undated).

BENGAL FLORICAN *Houbaropsis bengalensis* (EN) Inglis *et al.* (1920) noted that 'this fine bird is steadily decreasing owing to the indiscriminate shooting of hens and the increasing acreage under tea'. Anon. (undated) listed it as probably extinct in Buxa Tiger Reserve.

LESSER FLORICAN *Sypheotides indica* (CR) 'Decidedly uncommon. Two were shot at Neora Nuddy tea garden not very far from Baradighi. O'Donel has recorded them from Hasimara. He has only seen them in April, May and June' (Inglis *et al.* 1920).

BLACK-NECKED CRANE *Grus nigricollis* (VU) One seen on 2 December 1992 (Sanyal 1995).

WOOD SNIPE *Gallinago nemoricola* (VU) Inglis *et al.* (1920) noted that it was a very irregular winter visitor but was 'commoner before so much jungle was cleared for tea'.

WHITE-BELLIED HERON *Ardea insignis* (EN) Not specifically recorded from Buxa, but Inglis *et al.* (1920) noted that it was 'Uncommon and keeping to the larger rivers and those running through the forest. O'Donel remarks that

it disappears from the plains during the rains and that it generally feeds at dusk, but also occasionally does so at midday'.

SPOT-WINGED STARLING *Saroglossa spiloptera* (LR: nt) Inglis *et al.* (1920) found it to be 'very common along the base of the hills, occasionally descending to the plains.'

JERDON'S BABBLER *Chrysomma altirostre* (VU) Inglis *et al.* (1920) noted that it was 'recorded from Bhutan and Buxa duars', but it was not recorded by O'Donel or Inglis (1952-1969).

FINN'S WEAVER *Ploceus megarhynchus* (VU) O'Donel (1916) found a breeding colony at Hasimara (west of Buxa on the river Torsa) in June 1912. Inglis *et al.* (1920) noted that O'Donel 'never got the birds again', but Inglis (1952-1969) secured specimens from the same locality on 15 February 1927. Anon. (undated) listed it as occurring in Buxa Tiger Reserve.

THREATS TO THE AREA

The Buxa range is an area noted for dacoits, and we were warned to be careful away from the main village. Unofficial settlement within the park is illegal, but enforcement of regulations is difficult. Encroachment by local people is carefully concealed from most vantage points so the forest appears continuous. The reserve is under considerable pressure, with a human population of c. 200,000 and about 12,500 livestock. There are plans for a large multi-purpose dam on the Sankosh river.

We would like to thank the Range Officer of Buxa Range, Mr S. K. Barai, and the Range Officer and Beat Officers of Jainti Range for their co-operation and enthusiasm during our visit. We would also like to thank Mike Crosby and Tim Inskipp for their help and suggestions with the manuscript.

REFERENCES

- Anon. (undated) *Avifauna, Buxa Tiger Reserve*.
- Abdulali, H. (1968-) A catalogue of the birds in the collection of the Bombay Natural History Society. *J. Bombay Nat. Hist. Soc.* 65-.
- Collar, N. J., Crosby, M. J. and Stattersfield, A. J. (1994) *Birds to watch 2: the world list of threatened birds*. Cambridge: BirdLife International, Conservation Series No. 4.
- Inglis, C. M. (1952-1969) Birds of the duars. *J. Bengal Nat. Hist. Soc.* 25: 121-127, 164-169, 196-200; 26: 1-8, 47-56, 93-99, 149-156; 27: 9-12, 55-58, 83-95, 129-155; 28: 18-51, 102-115, 153-161; 29: 16-25, 88-94, 150-160; 30: 35-42, 81-97, 166-181; 31: 14-32, 49-60; 32: 1-9, 69-73; 33: 121-123, 181-184; 34: 1-4, 85-87; 35: 1-5, 49-63.
- Inglis, C. M., Travers, W. L., O'Donel, H. V. and Shebbeare, E. O. (1920). A tentative list of the vertebrates of Jalpaiguri district, Bengal. *Birds. J. Bombay Nat. Hist. Soc.* 26: 988-999; 27: 151-158.

- Inskipp, C. (1989) *Nepal's forest birds: their status and conservation*. Cambridge, U.K.: International Council for Bird Preservation (Monograph No. 4).
- Law, S. C. (1953) Occurrence of the Smew [*Mergellus albellus* (Linn.)] in West Bengal. *J. Bombay Nat. Hist. Soc.* 51: 508-509.
- O'Donel, H. V. (1916) The Eastern Baya (*Ploceus megarhynchus*) nesting in the same tree as the Jungle Bee (*Apis indicus*). *J. Bombay Nat. Hist. Soc.* 24: 821.
- Rodgers, W. A. and Panwar, H. S. (1988) Planning a wildlife protected area network in India. 2 volumes. Project FO: IND/82/003. Dehra Dun: FAO.
- Sanyal, P. (1995) Rare crane of India. *J. Bombay Nat. Hist. Soc.* 91: 453.
- Stevens, H. (1923-1925) Notes on the birds of the Sikkim Himalayas. *J. Bombay Nat. Hist. Soc.* 29: 503-518, 723-740, 1007-1030; 30: 54-71, 352-379, 664-685, 872-893.

Desmond Allen, 1158 No Ga Ya Cho, Machida Shi, Tokyo 19500, Japan.
John Anderton, 436 E. Nelson Ave., Alexandria, VA 22301, USA.

Krys Kazmierczak, 9 Norwich Road, Northwood, Middx. HA6 1ND, U.K.

APPENDIX

SYSTEMATIC LIST OF SPECIES RECORDED IN BUXA
TIGER RESERVE

	This survey	Anon. (undated) and others	Inglis <i>et al.</i> (1920)
	Jainti and Buxa	Buxa	Jaipalguri district
GREY FRANCOLIN <i>Francolinus pondicerianus</i>		A	x
BLACK FRANCOLIN <i>Francolinus francolinus</i>		A	U
SWAMP FRANCOLIN <i>Francolinus gularis</i> (VU)		A	Decreasing
COMMON QUAIL <i>Coturnix coturnix</i>		A	x
RAIN QUAIL <i>Coturnix coromandelica</i>		A	x
BLUE-BREADED QUAIL <i>Coturnix chinensis</i>			x
MANIPUR BUSH QUAIL <i>Pedicularia manipurensis</i> (VU)			x
RUFOUS-THROATED PARTRIDGE <i>Arborophila rufogularis</i>		A	C, Buxa
CHESTNUT-BREADED PARTRIDGE <i>Arborophila mandellii</i> (VU)	B?		A, Bhutan Duars
HIMALAYAN MONAL <i>Lophophorus impejanus</i>		R, Buxa-Sinchula	
RED JUNGLEFOWL <i>Gallus gallus</i>	JB	A	C
KALIJ PHEASANT <i>Lophura leucomelanos</i>	B		x
GREY PEACOCK PHEASANT <i>Polyplectron bicalcaratum</i>		St	R, Buxa
BLUE PEAFOWL <i>Pavo cristatus</i>	B	A	LC
FULVOUS WHISTLING DUCK <i>Dendrocygna bicolor</i>		R	
LESSER WHISTLING DUCK <i>Dendrocygna javanica</i>		A	C
GREYLAG GOOSE <i>Anser anser</i>		R	
BAR-HEADED GOOSE <i>Anser indicus</i>			U
RUDY SHELDUCK <i>Tadorna ferruginea</i>			C
WHITE-WINGED DUCK <i>Cairina scutulata</i> (EN)			Neora river (possible)
COTTON PYGMY-GOOSE <i>Nettapus coromandelianus</i>		A	C
GADWALL <i>Anas strepera</i>			U
FALCATED DUCK <i>Anas falcata</i>		R	
EURASIAN WIGEON <i>Anas penelope</i>			U
MALLARD <i>Anas platyrhynchos</i>			U
NORTHERN PINTAIL <i>Anas acuta</i>		A	C
GARGANEY <i>Anas querquedula</i>			F
NORTHERN SHOVELER <i>Anas clypeata</i>			F
COMMON TEAL <i>Anas crecca</i>		A	C
RED-CRESTED POCHARD <i>Rhodonessa Rufina</i>			x
COMMON POCHARD <i>Aythya ferina</i>		A	F
FERRUGINOUS POCHARD <i>Aythya nyroca</i> (VU)			C
TUFFED DUCK <i>Aythya fuligula</i>		A	F
SMEW <i>Mergellus albellus</i>			L
COMMON MERGANSER <i>Mergus merganser</i>		A	C, Sankosh
YELLOW-LEGGED BUTTONQUAIL <i>Turnix tanki</i>			x, Bhutan duars
BARRER BUTTONQUAIL <i>Turnix suscitator</i>		A	x
EURASIAN WRYNECK <i>Jynx torquilla</i>		I (Rajabhatkhawa)	F (Inglis)
SPECKLED PICULET <i>Picumnus innominatus</i>	B	A	C
WHITE-BROWED PICULET <i>Sasia ochracea</i>		S, I (Rajabhatkhawa)	C
GREY-CAPPED PYGMY WOODPECKER <i>Dendrocopos canicapillus</i>	JB	Sl, I	U
FULVOUS-BREADED WOODPECKER <i>Dendrocopos macei</i>			C
CRIMSON-BREADED WOODPECKER <i>Dendrocopos cathpharius</i>	B 1500m	A	

	B	A	C
	This survey	Anon. (undated) and others	Inglis <i>et al.</i> (1920)
	Jainti and Buxa	Buxa	Jaipalguri district
DARJEELING WOODPECKER <i>Dendrocopos darjellensis</i>	B		
RUFOUS WOODPECKER <i>Ceuleus brachyurus</i>	J	A	C
			U (Inglis)
			U, Hasimara, Haldibari
LESSER YELLOWNAPE <i>Picus chlorolophus</i>	JB	Ab	C
GREATER YELLOWNAPE <i>Picus flavinucha</i>	B	A	U (Inglis)
STREAK-THROATED WOODPECKER <i>Picus xanthopygaeus</i>			U, Hasimara, Haldibari
GREY-HEADED WOODPECKER <i>Picus canus</i>	J	A	C
HIMALAYAN FLAMEBACK <i>Dinopium shorii</i>	B	A	U
BLACK-RUMPED FLAMEBACK <i>Dinopium benghalense</i>			2 records (Inglis)
GREATER FLAMEBACK <i>Chrysocolaptes lucidus</i>	J		C
BAY WOODPECKER <i>Blythipicus pyrrhotis</i>	B		U (O'Donel)
GREAT BARBET <i>Megalaima virens</i>	JB	A, St	C
LINEATED BARBET <i>Megalaima lineata</i>	JB	A, St	C
GOLDEN-THROATED BARBET <i>Megalaima franklinii</i>	JB		Rehti, 28 Feb 1930
BLUE-THROATED BARBET <i>Megalaima asiatica</i>	JB	A	C
BLUE-EARED BARBET <i>Megalaima australis</i>	JB	I	U
COPPERSMITH BARBET <i>Megalaima haemacephala</i>	J		U
INDIAN GREY HORNBILL <i>Ocyroceros birostris</i>			U
ORIENTAL PIED HORNBILL <i>Anthracceros albirostris</i>	J		C
GREAT HORNBILL <i>Buceros bicornis</i>		A, St	C
RUFOUS-NECKED HORNBILL <i>Aceros nipalensis</i> (VU)	B	A	R, Buxa
WREATHED HORNBILL <i>Aceros undulatus</i>	J	A	x, Buxa
EURASIAN HOODEE <i>Upupa epops</i>		A	C
RED-HEADED TROGON <i>Harpactes erythrocephalus</i>	B		x
INDIAN ROLLER <i>Coracias benghalensis</i>	B		C
DOLLARBIRD <i>Eurystomus orientalis</i>		S	U
COMMON KINGFISHER <i>Alcedo atthis</i>		A, Ab	C
BLUE-EARED KINGFISHER <i>Alcedo meninting</i>		A	x, Rajabhatkhawa
ORIENTAL DWARF KINGFISHER <i>Ceyx erithacus</i>		A	X
STORK-BILLED KINGFISHER <i>Halcyon capensis</i>			C
WHITE-THROATED KINGFISHER <i>Halcyon smymensis</i>	B	A	C
CRESTED KINGFISHER <i>Megaceryle lugubris</i>			x
PIED KINGFISHER <i>Ceryle rudis</i>			C
BLUE-BEARDED BEE-EATER <i>Nyctyornis athertoni</i>	J		C
GREEN BEE-EATER <i>Merops orientalis</i>		A, St	C
BLUE-TAILED BEE-EATER <i>Merops philippinus</i>		A	C
CHESTNUT-HEADED BEE-EATER <i>Merops leschenaulti</i>		A	C
PIED CUCKOO <i>Clamator jacobinus</i>			C
CHESTNUT-WINGED CUCKOO <i>Clamator coromandus</i>		I (Rajabhatkhawa)	C
LARGE HAWK CUCKOO <i>Hierococcyx sparveriioides</i>			Hasimara, 2 Mar 1939
COMMON HAWK CUCKOO <i>Hierococcyx varius</i>		A	C
HODGSON'S HAWK CUCKOO <i>Hierococcyx fugax</i>	B		
INDIAN CUCKOO <i>Cuculus micropterus</i>		A	C
COMMON CUCKOO <i>Cuculus canorus</i>		A	x
ORIENTAL CUCKOO <i>Cuculus saturatus</i>			x
LESSER CUCKOO <i>Cuculus poliocephalus</i>			Haldibari, 13 Sep 1930
BANDED BAY CUCKOO <i>Cacomantis sonneratii</i>		R	
GREY-BELLIED CUCKOO <i>Cacomantis passerinus</i>			U (O'Donel)
PLAIN TIVE CUCKOO <i>Cacomantis merulinus</i>			F (Inglis)
ASIAN EMERALD CUCKOO <i>Chrysococcyx maculatus</i>			Moraghat
DROGO CUCKOO <i>Surniculus lugubris</i>	B		C (O'Donel)
ASIAN KOEL <i>Eudynamis scolopacea</i>		A	C
GREEN-BILLED MALKONA <i>Phaenicophaeus tristis</i>	B	A, Ab	C

	This survey	Anon. (undated) and others	Inglis <i>et al.</i> (1920)
	Jainti and Buxa	Buxa	Jaipauri district
SIRKEER MALKOHA <i>Phaenicophaeus leschenaultii</i>			x, Bhutan duars
GREATER COUGAL <i>Centropus sinensis</i>			C
LESSEER COUGAL <i>Centropus bengalensis</i>			C
VERNAL HANGING PARROT <i>Loriculus vernalis</i>			x, Bhutan duars
ALEXANDRINE PARAKEET <i>Psittacula eupatria</i>		A	F
ROSE-RINGED PARAKEET <i>Psittacula krameri</i>		A	C
PLUM-HEADED PARAKEET <i>Psittacula cyanocephala</i>		A	F
BLOSSOM-HEADED PARAKEET <i>Psittacula roseata</i>			x
RED-BREASTED PARAKEET <i>Psittacula alexandri</i>	JB	A, Ab	C
HIMALAYAN SWIFLET <i>Collocalia brevirostris</i>	B		x
WHITE-THROATED NEEDLETAIL <i>Hirundapus caudacutus</i>			C
ASIAN PALM SWIFT <i>Cypsiurus balasensis</i>	B	A	C
ALPINE SWIFT <i>Tachymarpis melba</i>			U
FORK-TAILED SWIFT <i>Apus pacificus</i>			C
HOUSE SWIFT <i>Apus affinis</i>		A	C
CRESTED TREESWIFT <i>Hemiprocne coronata</i>			U
BARN OWL <i>Tyto alba</i>			U
GRASS OWL <i>Tyto capensis</i>			C
MOUNTAIN SCOPS OWL <i>Otus spilocephalus</i>	B	A	x
ORIENTAL SCOPS OWL <i>Otus sunia</i>		Ab	C
COLLARED SCOPS OWL <i>Otus bakkamoena</i>			C
EURASIAN EAGLE OWL <i>Bubo bubo</i>		S	
SPOT-BELLIED EAGLE OWL <i>Bubo nipalensis</i> (LR: nt)		A	U
BROWN FISH OWL <i>Ketupa zeylonensis</i>			C
COLLARED OWLET <i>Glaucidium brodiei</i>	B		U
ASIAN BARRED OWLET <i>Glaucidium cuculoides</i>	JB		x
JUNGLE OWLET <i>Glaucidium radiatum</i>	B	A	C
SPOTTED OWLET <i>Athene brama</i>		A	C
BROWN HAWK OWL <i>Ninox scutulata</i>	J		C
GREY NIGHTJAR <i>Caprimulgus indicus</i>		St	
LARGE-TAILED NIGHTJAR <i>Caprimulgus macrurus</i>	B	A	C
SAVANNAH NIGHTJAR <i>Caprimulgus affinis</i>			U, Bhutan duars
ROCK PIGEON <i>Columba livia</i>		A	x
ASHY WOOD PIGEON <i>Columba pulchricollis</i>	B 1200m	A	R
ORIENTAL TURTLE DOVE <i>Streptopelia orientalis</i>	J	St	C
SPOTTED DOVE <i>Streptopelia chinensis</i>	JB		C
RED COLLARED DOVE <i>Streptopelia tranquebarica</i>			C
EURASIAN COLLARED DOVE <i>Streptopelia decaocto</i>		A	C
BARRED CUCKOO DOVE <i>Macropygia unchall</i>	J	A	C
EMERALD DOVE <i>Chalcophaps indica</i>	J	A	C
ORANGE-BREASTED GREEN PIGEON <i>Treron bicincta</i>		A	F
POMPADOUR GREEN PIGEON <i>Treron pompadora</i>			F
THICK-BILLED GREEN PIGEON <i>Treron curvirostra</i>			F
YELLOW-FOOTED GREEN PIGEON <i>Treron phoenicoptera</i>		A, St	C
PIN-TAILED GREEN PIGEON <i>Treron apicauda</i>	J	A	C
WEDGE-TAILED GREEN PIGEON <i>Treron sphenura</i>	JB	A	C
GREEN IMPERIAL PIGEON <i>Ducula aenea</i>	JB	A	C
MOUNTAIN IMPERIAL PIGEON <i>Ducula badia</i>	J		C, Buxa
BENGAL FLORICAN <i>Houbaropsis bengalensis</i> (EN)		A	Decreasing
LESSEER FLORICAN <i>Sypheotides indica</i> (CR)			U
BLACK-NECKED CRANE <i>Grus nigricollis</i> (VU)		Sa	
SLATY-LEGGED CRANE <i>Rallina eurizonoides</i>			F

	This survey	Anon. (undated) and others	Inglis <i>et al.</i> (1920)
	Jainti and Buxa	Buxa	Jaipauri district
SLATY-BREASTED RAIL <i>Gallirallus striatus</i>			x
WHITE-BREASTED WATERHEN <i>Amaurornis phoenicurus</i>		A	C
PURPLE SWAMPHEN <i>Porphyrrio porphyrio</i>		A	x
EURASIAN WOODCOCK <i>Scolopax rusticola</i>		A	U
SOLITARY SNIPE <i>Gallinago solitaria</i>			x
WOOD SNIPE <i>Gallinago nemoricola</i> (VU)		A	U, Buxa
PINTAIL SNIPE <i>Gallinago stenura</i>		A	x
COMMON SNIPE <i>Gallinago gallinago</i>		A	x
JACK SNIPE <i>Lymnocyptes minimus</i>			U
COMMON GREENSHANK <i>Tringa nebularia</i>			x
GREEN SANDPIPER <i>Tringa ochropus</i>		A	x
WOOD SANDPIPER <i>Tringa glareola</i>		A	x
COMMON SANDPIPER <i>Actitis hypoleucos</i>		A	x
LITTLE STINT <i>Calidris minuta</i>			x
TEMMINCK'S STINT <i>Calidris temminckii</i>			x
GREATER PAINTED-SNIPE <i>Rostratula benghalensis</i>		A	x
PHOENIX-TAILED JACANA <i>Hydrophasianus chirurgus</i>			x
BRONZE-WINGED JACANA <i>Metopidius indicus</i>		A	C
EURASIAN THICK-KNEE <i>Burhinus oediconemus</i>			C
GREAT THICK-KNEE <i>Esacus recurvirostris</i>			x
IBISBILL <i>Ibidorhyncha struthersii</i>		A, St	x
PACIFIC GOLDEN PLOVER <i>Pluvialis fulva</i>			x
GREY PLOVER <i>Pluvialis squatarola</i>		A	x
LONG-BILLED PLOVER <i>Charadrius placidus</i> (LR: nt)			x
LITTLE RINGED PLOVER <i>Charadrius dubius</i>			x
KENTISH PLOVER <i>Charadrius alexandrinus</i>			x
RIVER LAPWING <i>Vanellus duvaucellii</i>	J	A	C
RED-WATTLED LAPWING <i>Vanellus indicus</i>	J		C
SMALL PRATINCOLE <i>Glaucopis lactea</i>			C
INDIAN SKIMMER <i>Rynchops albigollis</i> (VU)			F, Sankoshi
RIVER TERN <i>Sterna aurantia</i>		A	x
LITTLE TERN <i>Sterna albifrons</i>			x, Sankoshi
BLACK-BELLIED TERN <i>Sterna acuticauda</i> (VU)			x
OSPREY <i>Pandion haliaetus</i>		St	U
JERDON'S BAZA <i>Aviceda jerdoni</i> (LR: nt)			x
BLACK BAZA <i>Aviceda lephotes</i>		A	F
ORIENTAL HONEY-BUZZARD <i>Pernis ptilorhynchus</i>			C
BLACK-SHOULDERED KITE <i>Elanus caeruleus</i>		A	U
BLACK KITE <i>Milvus migrans</i>	JB	A	C
BRAHMINY KITE <i>Haliastur indus</i>			U
PALLAS'S FISH EAGLE <i>Haliaeetus leucoryphus</i> (VU)			C
LESSEER FISH EAGLE <i>Ichthyaelus humilis</i> (LR: nt)			U
GREY-HEADED FISH EAGLE <i>Ichthyaelus ichthyaelus</i> (LR: nt)			F
WHITE-RUMPED VULTURE <i>Gyps bengalensis</i> (LR: nt)		A	C
LONG-BILLED VULTURE <i>Gyps indicus</i> (LR: nt)		A	C
HIMALAYAN GRIFFON <i>Gyps himalayensis</i>			C
CINEREOUS VULTURE <i>Aegypius monachus</i> (LR: nt)			U
RED-HEADED VULTURE <i>Sarcogyps calvus</i> (LR: nt)			C
CRESTED SERPENT EAGLE <i>Sphornis cheela</i>	JB		C
EURASIAN MARSH HARRIER <i>Circus aeruginosus</i>			U
HEN HARRIER <i>Circus cyaneus</i>			C
PALLID HARRIER <i>Circus macrourus</i> (LR: nt)			x

PIED HARRIER <i>Circus melanoleucos</i>			C
CRESTED GOSHAWK <i>Accipiter trivirgatus</i>	JB	A	R
	This survey	Anon. (undated) and others	Inglis <i>et al.</i> (1920)
	Jainti and Buxa	Buxa	Jalpaiguri district
SHIKRA <i>Accipiter badius</i>	B		C
BESRA <i>Accipiter virgatus</i>		A	C
EURASIAN SPARROWHAWK <i>Accipiter nisus</i>			U
COMMON BUZZARD <i>Buteo buteo</i>			X
BLACK EAGLE <i>Ictinaetus malayensis</i>	B		U
STEPPE EAGLE <i>Aquila nipalensis</i>	B		
BOOTED EAGLE <i>Hieraetus pennatus</i>			U
RUFIOUS-BELLIED EAGLE <i>Hieraetus kienerii</i>	B		R
CHANGEABLE HAWK EAGLE <i>Spizaetus cirrhatous</i>			F
MOUNTAIN HAWK EAGLE <i>Spizaetus nipalensis</i>	J	A	X
COLLARED FALCONET <i>Microhierax caerulescens</i>	B	A	F
COMMON KESTREL <i>Falco tinnunculus</i>			C
RED-NECKED FALCON <i>Falco chitiquera</i> (LR: nt)			F
ORIENTAL HOBBY <i>Falco severus</i>		St	U
PEREGRINE FALCON <i>Falco peregrinus</i>			U
LITTLE GREBE <i>Tachybaptus ruficollis</i>		A	X
DARTER <i>Anhinga melanogaster</i> (LR: nt)			X
LITTLE CORMORANT <i>Phalacrocorax niger</i>		A	C
GREAT CORMORANT <i>Phalacrocorax carbo</i>		A	F
WHITE-BELLIED HERON <i>Ardea insignis</i> (EN)		R	
PURPLE HERON <i>Ardea purpurea</i>		A	X
GREAT EGRET <i>Casmerodius albus</i>		A	F
INTERMEDIATE EGRET <i>Mesophoyx intermedia</i>		R	
CATTLE EGRET <i>Bubulcus ibis</i>	J	A	C
INDIAN POND HERON <i>Ardeola grayii</i>		A	C
LITTLE HERON <i>Butorides striatus</i>		A	C
BLACK-GROWNED NIGHT HERON <i>Nycticorax nycticorax</i>		A	X
CINNAMON BITTERN <i>Ixobrychus cinnamomeus</i>		A	C
GREAT BITTERN <i>Botaurus stellaris</i>			X
DALMATIAN/GREAT WHITE PELICAN <i>Pelecanus crispus/onocrotalus</i>		X	
BLACK STORK <i>Ciconia nigra</i>			U
WOOLLY-NECKED STORK <i>Ciconia episcopus</i>		A	R, Bhutan duars
BLACK-NECKED STORK <i>Ephippiorhynchus asiaticus</i>			C
LESSER ADJUTANT <i>Leptoptilos javanicus</i> (VU)			X
GREATER ADJUTANT <i>Leptoptilos dubius</i> (EN)			X
BLUE-NAPED PITTA <i>Pitta nipalensis</i> (LR: nt)			C
HOODED PITTA <i>Pitta sordida</i>			C
INDIAN PITTA <i>Pitta brachyura</i>		R	
SILVER-BREASTED BROADBILL <i>Seriophilus lunatus</i>		A	U, Rajabhatkawa
LONG-TAILED BROADBILL <i>Psarisomus dalhousiae</i>	J	A, St	C
ASIAN FAIRY BLUEBIRD <i>Irena puella</i>			C
GOLDEN-FRONTED LEAFBIRD <i>Chloropsis aurifrons</i>	J	A	C
ORANGE-BELLIED LEAFBIRD <i>Chloropsis hardwickii</i>	B	I	F
RUFIOUS-TAILED SHRIKE <i>Lanius isabellinus</i>			U
BROWN SHRIKE <i>Lanius cristatus</i>	B		C
BAY-BACKED SHRIKE <i>Lanius vittatus</i>			Haldibari, 20 Mar 1928
LONG-TAILED SHRIKE <i>Lanius schach</i>			C
GREY-BACKED SHRIKE <i>Lanius tephronotus</i>	B		C
COMMON GREEN MAGPIE <i>Cissa chinensis</i>	B	A	C
RUFIOUS TREEPIE <i>Dendrocitta vagabunda</i>		S, St	C

GREY TREEPIE <i>Dendrocitta formosae</i>	B	A	C
HOUSE CROW <i>Corvus splendens</i>		A	C
	This survey	Anon. (undated) and others	Inglis <i>et al.</i> (1920)
	Jainti and Buxa	Buxa	Jalpaiguri district
LARGE-BILLED CROW <i>Corvus macrorhynchos</i>	B	AIC	
ASHY WOODSWALLOW <i>Artamus fuscus</i>		A	C
EURASIAN GOLDEN ORIOLE <i>Oriolus oriolus</i>		S	
SLENDER-BILLED ORIOLE <i>Oriolus tenuirostris</i>		R	
BLACK-HOODED ORIOLE <i>Oriolus xanthornus</i>	JB	A, St	C
MAROON ORIOLE <i>Oriolus trillii</i>	J	A	C
LARGE CUCKOOSHRIKE <i>Coracina macaei</i>	JB		
BLACK-WINGED CUCKOOSHRIKE <i>Coracina melaschistos</i>	JB	A, St	F
BLACK-HEADED CUCKOOSHRIKE <i>Coracina melanoptera</i>			U
ROSY MINIVET <i>Pericrocotus roseus</i>		A	F
SMALL MINIVET <i>Pericrocotus cinnamomeus</i>			U
GREY-CHINNED MINIVET <i>Pericrocotus solaris</i>	JB	A	C
LONG-TAILED MINIVET <i>Pericrocotus ethologus</i>	JB	A	?
SHORT-BILLED MINIVET <i>Pericrocotus brevirostris</i>	B	A	F
SCARLET MINIVET <i>Pericrocotus flammeus</i>	JB	A	C
BAR-WINGED FLYCATCHER-SHRIKE <i>Hemipus picatus</i>	J		C (Inglis)
YELLOW-BELLIED FANTAIL <i>Rhipidura hypoxantha</i>	JB	St	C
WHITE-THROATED FANTAIL <i>Rhipidura albicollis</i>	JB		C
WHITE-BROWED FANTAIL <i>Rhipidura aureola</i>			C
BLACK DRONGO <i>Dicrurus macrocerus</i>		A	C
ASHY DRONGO <i>Dicrurus leucophaeus</i>	JB		C
WHITE-BELLIED DRONGO <i>Dicrurus caerulescens</i>		S	
CROW-BILLED DRONGO <i>Dicrurus annectans</i>			C
BRONZED DRONGO <i>Dicrurus aeneus</i>	JB		C
LESSER RACKET-TAILED DRONGO <i>Dicrurus remifer</i>	JB	A	F
SPANGLED DRONGO <i>Dicrurus hottentottus</i>	JB	A	C
GREATER RACKET-TAILED DRONGO <i>Dicrurus paradiseus</i>	JB	A	C
BLACK-NAPED MONARCH <i>Hypothymis azurea</i>		A	C
ASIAN PARADISE-FLYCATCHER <i>Terpsiphone paradisi</i>		A	C
COMMON IORA <i>Aegithina tiphia</i>	J	A, I (Buxa)	C
LARGE WOODSHRIKE <i>Tephrodornis gularis</i>	JB		C (Inglis)
COMMON WOODSHRIKE <i>Tephrodornis pondicerianus</i>		A	C
BROWN DIPPER <i>Cinclus pallasi</i>			U
BLUE-CAPPED ROCK THRUSH <i>Monticola cinctorhynchus</i>		I (Gorumara)	
CHESTNUT-BELLIED ROCK THRUSH <i>Monticola rufiventris</i>	JB	St	R
BLUE ROCK THRUSH <i>Monticola solitarius</i>	J	A	C
BLUE WHISTLING THRUSH <i>Myophonus caeruleus</i>	JB	A	C
PIED THRUSH <i>Zoothera wardii</i> (LR: nt)			Bhutan duars
ORANGE-HEADED THRUSH <i>Zoothera citrina</i>			F
PLAIN-BACKED THRUSH <i>Zoothera mollissima</i>	B 1500m		
LONG-TAILED THRUSH <i>Zoothera dixonii</i>		B 1900m	
SCALY THRUSH <i>Zoothera dauma</i>	J	A	X
LONG-BILLED THRUSH <i>Zoothera monticola</i> (LR: nt)		A	X
DARK-SIDED THRUSH <i>Zoothera marginata</i>			F
WHITE-COLLARED BLACKBIRD <i>Turdus albocinctus</i>	B 1700m		
GREY-WINGED BLACKBIRD <i>Turdus boulboul</i>	JB		C
DARK-THROATED THRUSH <i>Turdus ruficollis</i>		A	C
DARK-SIDED FLYCATCHER <i>Muscicapa sibirica</i>		A	F
ASIAN BROWN FLYCATCHER <i>Muscicapa dauurica</i>			X
SLATY-BACKED FLYCATCHER <i>Ficedula hodgsonii</i>	B	St	

RUFOUS-GORGETED FLYCATCHER <i>Ficedula strophilata</i>	B		x, Buxa
RED-THROATED FLYCATCHER <i>Ficedula parva</i>	JB	St	C
	This survey	Anon. (undated) and others	Inglis <i>et al.</i> (1920)
	Jainti and Buxa	Buxa	Jalpaiguri district
WHITE-GORGETED FLYCATCHER <i>Ficedula monileger</i>	B 700m + 1500m		
SNOWY-BROWED FLYCATCHER <i>Ficedula hyperythra</i>			
LITTLE PIED FLYCATCHER <i>Ficedula westermanni</i>	JB	A, St	F
SLATY-BLUE FLYCATCHER <i>Ficedula tricolor</i>	B	A	C
SAPPHIRE FLYCATCHER <i>Ficedula sapphira</i>	B 800m		
VERDITER FLYCATCHER <i>Eumyias thalassina</i>	J	A	x
LARGE NILTAVA <i>Niltava grandis</i>	JB below 800m		
SMALL NILTAVA <i>Niltava macgrigoriae</i>	JB	A	C
RUFOUS-BELLIED NILTAVA <i>Niltava sundara</i>	B	A	F
PALE-CHINNED FLYCATCHER <i>Cyornis poliolegens</i>	J	St	F
PALE BLUE FLYCATCHER <i>Cyornis unicolor</i>	J		
BLUE-THROATED FLYCATCHER <i>Cyornis rubeculoides</i>	B	A	F
PYGMY BLUE FLYCATCHER <i>Muscicapella hodgsoni</i>	J 180m + 870m		R, Buxa
GREY-HEADED CANARY FLYCATCHER <i>Culicicapa ceylonensis</i>	JB	A	C
SIBERIAN RUBYTHROAT <i>Luscinia caliope</i>			U
WHITE-TAILED RUBYTHROAT <i>Luscinia pectoralis</i>	B	A	C
BLUETHROAT <i>Luscinia svecica</i>		A	x
ORANGE-FLANKED BUSH ROBIN <i>Tarsiger cyanurus</i>	B		R, Buxa
GOLDEN BUSH ROBIN <i>Tarsiger chrysaeus</i>		B 1600m	
ORIENTAL MAGPIE ROBIN <i>Copsychus saularis</i>	JB	A	C
WHITE-RUMPED SHAMA <i>Copsychus malabaricus</i>	B	A, St	C
BLACK REDSTART <i>Phoenicurus ochurus</i>		S	x
HODGSON'S REDSTART <i>Phoenicurus hodgsoni</i>		St	U
DAURIAN REDSTART <i>Phoenicurus aurorus</i>		A	U
BLUE-FRONTED REDSTART <i>Phoenicurus frontalis</i>	B 1600m		
WHITE-CAPPED WATER REDSTART <i>Chaimarrornis leucocephalus</i>	JB	A	C
PLUMBEOUS WATER REDSTART <i>Rhyacornis fuliginosus</i>	JB	A	C
WHITE-BELLIED REDSTART <i>Hodgsonius phaeniceoides</i>	B		
WHITE-TAILED ROBIN <i>Myiometula leucura</i>	B		R, Jamguri
LITTLE FORKTAIL <i>Enicurus scouleri</i>	B		x
BLACK-BACKED FORKTAIL <i>Enicurus immaculatus</i>	J	A	C
SLATY-BACKED FORKTAIL <i>Enicurus schistaceus</i>	B		C
WHITE-CROWNED FORKTAIL <i>Enicurus leschenaulti</i>			U
SPOTTED FORKTAIL <i>Enicurus maculatus</i>	B	A	x
HODGSON'S BUSHCHAT <i>Saxicola insignis</i> (VU)			x
COMMON STONECHAT <i>Saxicola torquata</i>		A	C
WHITE-TAILED STONECHAT <i>Saxicola leucura</i>			C
PIED BUSHCHAT <i>Saxicola caprata</i>		A	x
GREY BUSHCHAT <i>Saxicola ferrea</i>	B	A	C
SPOT-WINGED STARLING <i>Saroglossa spiloptera</i> (LR: nt)		St	C
CHESTNUT-TAILED STARLING <i>Sturnus malabaricus</i>	J	A	C
COMMON STARLING <i>Sturnus vulgaris</i>		A	U
ASIAN PIED STARLING <i>Sturnus contra</i>		A	F
COMMON MYNA <i>Acridotheres tristis</i>	JB	A	C
BANK MYNA <i>Acridotheres ginginianus</i>		A	U
JUNGLE MYNA <i>Acridotheres fuscus</i>	J	A	C
HILL MYNA <i>Gracula religiosa</i>	JB	A, St	C
CHESTNUT-BELLIED NUTHATCH <i>Sitta castanea</i>	JB	A	C
WHITE-TAILED NUTHATCH <i>Sitta himalayensis</i>	B 1500+m		
VELVET-FRONTED NUTHATCH <i>Sitta frontalis</i>	B 1900m	I (Sankosh)	C

BEAUTIFUL NUTHATCH <i>Sitta formosa</i> (VU)	B		x
WALLCREEPER <i>Tichodroma muraria</i>	J		
	This survey	Anon. (undated) and others	Inglis <i>et al.</i> (1920)
	Jainti and Buxa	Buxa	Jalpaiguri district
BROWN-THROATED TREECREEPER <i>Certhia discolor</i>	B		
FIRE-CAPPED TIT <i>Cephalopyrus flammiceps</i>	B		R
GREAT TIT <i>Parus major</i>		A	C
GREEN-BACKED TIT <i>Parus monticolus</i>	JB	A, St	C, Buxa
YELLOW-CHEEKED TIT <i>Parus spilonotus</i>	JB		
SULTAN TIT <i>Melanochlora sultanea</i>	JB	A	C
BLACK-THROATED TIT <i>Aegithalos concinnus</i>	B 1300-1600m		
SAND MARTIN <i>Riparia riparia</i>			I (Buxa)
PLAIN MARTIN <i>Riparia paludicola</i>		St	C
BARN SWALLOW <i>Hirundo rustica</i>		A	C
WIRE-TAILED SWALLOW <i>Hirundo smithii</i>			C
RED-RUMPED SWALLOW <i>Hirundo daurica</i>		A	C
ASIAN HOUSE MARTIN <i>Delichon dasypus</i>	B		I (Rajabhatkhawa)
NEPAL HOUSE MARTIN <i>Delichon nipalensis</i>	B		
STRIATED BULBUL <i>Pycnonotus striatus</i>			C
BLACK-CRESTED BULBUL <i>Pycnonotus melanicterus</i>	JB		C
RED-WHISKERED BULBUL <i>Pycnonotus jocosus</i>		A	C
HIMALAYAN BULBUL <i>Pycnonotus leucogenys</i>		S	?
RED-VENTED BULBUL <i>Pycnonotus cafer</i>	JB	A	C
WHITE-THROATED BULBUL <i>Alophoixus flaveolus</i>	J	A	C
ASHY BULBUL <i>Hemixos flavala</i>	JB		C, Buxa
MOUNTAIN BULBUL <i>Hypsipetes maclellandii</i>	B 1500m		
BLACK BULBUL <i>Hypsipetes leucocephalus</i>	JB		C
BRIGHT-HEADED CISTICOLA <i>Cisticola exilis</i>			C
GREY-CROWNED PRINIA <i>Prinia cinereocapilla</i> (LR: nt)			Bhutan duars
RUFESCENT PRINIA <i>Prinia rufescens</i>	B	St	
GREY-BREADED PRINIA <i>Prinia hodgsonii</i>		St	C
JUNGLE PRINIA <i>Prinia sylvatica</i>		A	C
YELLOW-BELLIED PRINIA <i>Prinia flaviventris</i>		A	C
ASHY PRINIA <i>Prinia socialis</i>		A	C
PLAIN PRINIA <i>Prinia inornata</i>			x
ORIENTAL WHITE-EYE <i>Zosterops palpebrosus</i>	J	A	C
CHESTNUT-HEADED TESIA <i>Tesia castaneocoronata</i>	B	A, St	C, Buxa
GREY-BELLIED TESIA <i>Tesia cyaniventer</i>	JB		C
PALE-FOOTED BUSH WARBLER <i>Cettia pallidipes</i>		S	x
BROWNISH-FLANKED BUSH WARBLER <i>Cettia fortipes</i>			U
GREY-SIDED BUSH WARBLER <i>Cettia brunneifrons</i>	B 1800m		
SPOTTED BUSH WARBLER <i>Bradypterus thoracicus</i>		A	C
CHINESE BUSH WARBLER <i>Bradypterus tacsanowskii</i>			x, Bhutan duars
BROWN BUSH WARBLER <i>Bradypterus luteoventris</i>			x
GRASSHOPPER WARBLER <i>Locustella naevia</i>			x, Bhutan duars
BLYTH'S REED WARBLER <i>Acrocephalus dumetorum</i>			C
THICK-BILLED WARBLER <i>Acrocephalus aedon</i>	J		F
MOUNTAIN TAILORBIRD <i>Orthotomus cuculatus</i>	B		R
COMMON TAILORBIRD <i>Orthotomus sutorius</i>	B	A	C
DARK-NECKED TAILORBIRD <i>Orthotomus atrogularis</i>			x
COMMON CHIFFCHAFF <i>Phylloscopus collybita</i>		A	x
DUSKY WARBLER <i>Phylloscopus fuscatus</i>	J	St	x
SMOKY WARBLER <i>Phylloscopus fulgiventis</i>		A	x
BLUFF-BARRED WARBLER <i>Phylloscopus pulcher</i>	B		x, Buxa

ASHY-THROATED WARBLER <i>Phylloscopus maculipennis</i>	B 1600m	I (Buxa)	
LEMON-RUMPED WARBLER <i>Phylloscopus chloronotus</i>	JB 870m	St	
	This survey	Anon. (undated) and others	Inglis <i>et al.</i> (1920)
	Jainti and Buxa	Buxa	Jalpaiguri district
YELLOW-BROWED WARBLER <i>Phylloscopus inornatus</i>	B 600m	St	
GREENISH WARBLER <i>Phylloscopus trochiloides</i>		A, I, St	x
WESTERN CROWNED WARBLER <i>Phylloscopus occipitalis</i>		I (Rajabhatkhawa)	
EASTERN CROWNED WARBLER <i>Phylloscopus coronatus</i>	B		
BLYTH'S LEAF WARBLER <i>Phylloscopus reguloides</i>	JB	St	
YELLOW-VENTED WARBLER <i>Phylloscopus cantator</i>	JB	A	x, Buxa
GOLDEN-SPECTACLED WARBLER <i>Seiurus burkii</i>	JB	A, St	C
GREY-HOODED WARBLER <i>Seiurus xanthoschistos</i>	B	I (Buxa)	
WHITE-SPECTACLED WARBLER <i>Seiurus affinis</i>	B 1200m	I (Rajabhatkhawa)	
GREY-CHEEKED WARBLER <i>Seiurus poliopteryx</i>	B 1300 + 1500m		
CHESTNUT-CROWNED WARBLER <i>Seiurus castaneiceps</i>	B 870m	St	
BLACK-FACED WARBLER <i>Abruscopsis schisticeps</i>	B 1500m		
STRIATED GRASSBIRD <i>Megalurus palustris</i>			x, Buxa
RUFOUS-RUMPED GRASSBIRD <i>Graminicola bengalensis</i>			U
WHITE-CRESTED LAUGHINGTHRUSH <i>Garrulax leucolophus</i>	B	A	C
LESSER NECKLACED LAUGHINGTHRUSH <i>Garrulax monileger</i>	B	A	F
GREATER NECKLACED LAUGHINGTHRUSH <i>Garrulax pectoralis</i>	JB		x
STRIATED LAUGHINGTHRUSH <i>Garrulax striatus</i>	B		F, Buxa
RUFOUS-NECKED LAUGHINGTHRUSH <i>Garrulax ruficollis</i>		A	C
RUFOUS-CHINNED LAUGHINGTHRUSH <i>Garrulax rufogularis</i>	B	Ab	x, Buxa
GREY-SIDED LAUGHINGTHRUSH <i>Garrulax caerulatus</i>	B		
STREAKED LAUGHINGTHRUSH <i>Garrulax lineatus</i>	B		
BLUE-WINGED LAUGHINGTHRUSH <i>Garrulax squamatus</i>	B 1200m		
BLACK-FACED LAUGHINGTHRUSH <i>Garrulax affinis</i>	B 1900m		
CHESTNUT-CROWNED LAUGHINGTHRUSH <i>Garrulax erythrocephalus</i>	B 1200m		
RED-WINGED LIOCICHLA <i>Liocichla phoenicea</i>		A, Ab	x, Buxa
ABBOTT'S BABBLER <i>Malacocincla abbotti</i>	J		
PUFF-THROATED BABBLER <i>Pellorneum ruficeps</i>	B		
RUSTY-CHEEKED SCIMITAR BABBLER <i>Pomatorhinus erythrogenys</i>	B	A	C, Buxa
WHITE-BROWED SCIMITAR BABBLER <i>Pomatorhinus schisticeps</i>	B	A	C
STREAK-BREASTED SCIMITAR BABBLER <i>Pomatorhinus ruficollis</i>	B		
CORAL-BILLED SCIMITAR BABBLER <i>Pomatorhinus ferruginosus</i>	B		
LONG-BILLED WREN BABBLER <i>Rimator malacoptilus</i> (LR: nt)	B above 1500m		R
SCALY-BREASTED WREN BABBLER <i>Pnoepyga albiventer</i>	B		
PYGMY WREN BABBLER <i>Pnoepyga pusilla</i>	B	A, St	C
RUFOUS-FRONTED BABBLER <i>Stachyris rufifrons</i>			x, Bhutan duars
RUFOUS-CAPPED BABBLER <i>Stachyris ruficeps</i>	B		C
GOLDEN BABBLER <i>Stachyris chrysaea</i>	B 1100-1500m		C
GREY-THROATED BABBLER <i>Stachyris nigricaps</i>	B		x, Buxa
STRIPED TIT BABBLER <i>Macronous gularis</i>	J		
CHESTNUT-CAPPED BABBLER <i>Timalia pileata</i>		St	C
YELLOW-EYED BABBLER <i>Chrysomma sinense</i>			C
JERDON'S BABBLER <i>Chrysomma alirostre</i> (VU)			Buxa duars
STRIATED BABBLER <i>Turdoides earlei</i>		A	F
SLENDER-BILLED BABBLER <i>Turdoides longirostris</i> (LR: nt)			C
JUNGLE BABBLER <i>Turdoides striatus</i>		A	C
SILVER-EARED MESIA <i>Leiothrix argentauris</i>	JB		
CUTIA <i>Cutia nipalensis</i>	B above 1000m, flocks of 5-15 seen early in period		
BLACK-HEADED SHRIKE BABBLER <i>Pteruthius rufiventer</i>	B		
WHITE-BROWED SHRIKE BABBLER <i>Pteruthius flaviscapis</i>	B		R

BLACK-EARED SHRIKE BABBLER <i>Pteruthius melanotis</i>	B		
WHITE-HOODED BABBLER <i>Gampsorhynchus rufulus</i>			C
	This survey	Anon. (undated) and others	Inglis <i>et al.</i> (1920)
	Jainti and Buxa	Buxa	Jalpaiguri district
RUSTY-FRONTED BARWING <i>Actinodura egertoni</i>	B	A	x, Buxa
HOARY-THROATED BARWING <i>Actinodura nipalensis</i>	B		
BLUE-WINGED MINLA <i>Minla cyanouroptera</i>	JB		x, Buxa
CHESTNUT-TAILED MINLA <i>Minla strigula</i>	B 1800+m		
RED-TAILED MINLA <i>Minla ignotincta</i>	JB	A, St	R, Buxa
YELLOW-THROATED FULVETTA <i>Alcippe cinerea</i> (LR: nt)	B		
RUFOUS-THROATED FULVETTA <i>Alcippe rufogularis</i> (LR: nt)			Bhutan duars
RUFOUS-WINGED FULVETTA <i>Alcippe castaneiceps</i>	B 1600+m		
NEPAL FULVETTA <i>Alcippe nipalensis</i>	B 1300+m		
RUFOUS-BACKED SIBIA <i>Heterophasia annectans</i>	B 800m		
RUFOUS SIBIA <i>Heterophasia capistrata</i>	JB	A	x, Buxa
LONG-TAILED SIBIA <i>Heterophasia picaoides</i>	B	A	x, Buxa
STRIATED YUHINA <i>Yuhina castaneiceps</i>			x, Bhutan duars
WHITE-NAPED YUHINA <i>Yuhina bakeri</i>	B		
WHISKERED YUHINA <i>Yuhina flavicollis</i>	B	A, Ab, St	C
STRIPE-THROATED YUHINA <i>Yuhina gularis</i>	B		R
RUFOUS-VENTED YUHINA <i>Yuhina occipitalis</i>	B		R
BLACK-CHINNED YUHINA <i>Yuhina nigrimenta</i>	B	Ab	C, Buxa
WHITE-BELLIED YUHINA <i>Yuhina zantholeuca</i>	B		C, Buxa
GREY-HEADED PARROTBILL <i>Paradoxornis gularis</i>	B		
BLACK-BREASTED PARROTBILL <i>Paradoxornis flavirostris</i> (VU)			x, Bhutan Terai
GREATER RUFOUS-HEADED PARROTBILL <i>Paradoxornis ruficeps</i> (LR: nt)		B	Ab, R, Buxa
RUFOUS-WINGED LARK <i>Mirafra assamica</i>		A	C
SAND LARK <i>Calandrella rayal</i>			U
ORIENTAL SKYLARK <i>Alauda gulgula</i>		A	C
YELLOW-VENTED FLOWERPECKER <i>Dicaeum chrysorrheum</i>			I (nr Rajabhatkhawa)
PALE-BILLED FLOWERPECKER <i>Dicaeum erythrorhynchus</i>		A	x
PLAIN FLOWERPECKER <i>Dicaeum concolor</i>	B	A	C
FIRE-BREASTED FLOWERPECKER <i>Dicaeum ignipectus</i>	B		x
SCARLET-BACKED FLOWERPECKER <i>Dicaeum cruentatum</i>		A	C
RUBY-CHEEKED SUNBIRD <i>Antheptes singalensis</i>			x
PURPLE SUNBIRD <i>Nectarinia asiatica</i>		A	C
MRS GOULD'S SUNBIRD <i>Aethopyga gouldiae</i>		A	C
GREEN-TAILED SUNBIRD <i>Aethopyga nipalensis</i>	B		
BLACK-THROATED SUNBIRD <i>Aethopyga saturata</i>	B	A	x
CRIMSON SUNBIRD <i>Aethopyga siparaja</i>	J	A	C
FIRE-TAILED SUNBIRD <i>Aethopyga ignicauda</i>		R	
LITTLE SPIDERHUNTER <i>Arachnothera longirostra</i>	B		R
STREAKED SPIDERHUNTER <i>Arachnothera magna</i>	JB	A	C
HOUSE SPARROW <i>Passer domesticus</i>		A	C
RUSSET SPARROW <i>Passer rutilans</i>			x
EURASIAN TREE SPARROW <i>Passer montanus</i>		A	x
FOREST WAGTAIL <i>Dendronanthus indicus</i>		R	
WHITE WAGTAIL <i>Motacilla alba</i>			C
WHITE-BROWED WAGTAIL <i>Motacilla maderaspatensis</i>			U
CITRINE WAGTAIL <i>Motacilla citreola</i>			C
YELLOW WAGTAIL <i>Motacilla flava</i>		A	C
GREY WAGTAIL <i>Motacilla cinerea</i>	B	A	C
RICHARD'S PIPIT <i>Anthus richardi</i>			C
PADDYFIELD PIPIT <i>Anthus rufulus</i>			C

TAWNY PIPIT <i>Anthus campestris</i>		A	C
BLYTH'S PIPIT <i>Anthus godlewskii</i>	This survey	Anon. (undated) and others	Inglis <i>et al.</i> (1920)
	Jainti and Buxa	Buxa	Jalpaiguri district
OLIVE-BACKED PIPIT <i>Anthus hodgsoni</i>	B	A	C
RUFOUS-BREASTED ACCENTOR <i>Prunella strophilata</i>	B		
BAYA WEAVER <i>Ploceus philippinus</i>		A	C
FINN'S WEAVER <i>Ploceus megarhynchus</i> (VU)		A	Hasimara
RED AVADAVAT <i>Amandava amandava</i>			x
WHITE-RUMPED MUNIA <i>Lonchura striata</i>		A	U
SCALY-BREASTED MUNIA <i>Lonchura punctulata</i>		A	C
BLACK-HEADED MUNIA <i>Lonchura malacca</i>		S	F
COMMON ROSEFINCH <i>Carpodacus erythrinus</i>		A	U
SCARLET FINCH <i>Haematospiza sipahi</i>		A	R
CRESTED BUNTING <i>Melophus lathami</i>			F
LITTLE BUNTING <i>Emberiza pusilla</i>		A	F
YELLOW-BREASTED BUNTING <i>Emberiza aureola</i>			U
CHESTNUT BUNTING <i>Emberiza rutila</i>			

A = Anon. (undated)
L = Law (1953)
St = Stevens (1923-1925)

Ab = Abdulali (1968-)
S = R. Singh (pers. comm.)

I = Inglis (1952-1959)
Sa = Sanyal (1995)

(C) = Critically endangered
(LR: nt) = Low risk: Near-threatened

(EN) = Endangered

(VU) = Vulnerable

C = common
R = rare

F = fairly common
x = status n

U = uncommon

Some bird observations from central Bhutan, May 1994

ROBERT TYMSTRA, SCOTT CONNOP, and CHADO TSHERING

Results of a survey in western and central Bhutan in May 1994 are presented. The survey focused on subtropical and temperate zone areas in Jigme Dorji National Park and the buffer zone of Black Mountain National Park and yielded 252 species of birds, including first published records for Bhutan of Common Coot *Fulica atra*, Russet Bush Warbler *Bradypterus seebohmi*, and Forest Wagtail *Dendronanthus indicus*.

An avifaunal survey in parts of western and central Bhutan was conducted from 2 May to 26 May 1994. The project, designed to increase knowledge of the birdlife of some of Bhutan's less-studied areas, was sponsored by the WWF Bhutan Programme. The ornithological survey team consisted of Scott and Joanne Connop, Dr. Murray Gell-Mann, Marsha Southwicke, Chado Tshering, and Robert Tymstra. In addition to documenting the birdlife, several hours of bird song recordings were made for future use in conservation and training in survey and recording techniques was provided to Bhutanese biologists.

Our survey time was spent mainly in Jigme Dorji National Park and in the buffer zone bordering the Black Mountains National Park. We found a total of 252 species of birds, including several that were apparently new to the country, or had only been documented once or twice before. We concentrated our efforts on the subtropical and temperate broadleaf forests which Bhutan has in abundance; these forests are a stronghold for several bird species difficult to find elsewhere.

Our expedition (see Figure 1 for locations) began in Thimphu (2400 m) from where we drove east towards Tongsa (2,100 m), stopping along the way at Dochhu La (3,215 m), Nobding (2,900 m), and Pele La (3,300 m). From Tongsa, we made a daytrip east to Yutong La (3,400 m), then drove south to Wangdinala (1,000 m) where we spent three days. We continued with a week-long trek along the Mangde Chhu (river) to Nobji (1,300 m) via Nimshong. We camped for three nights along a watercourse 5 km upstream of Nobji before retracing our steps to Wangdinala and Tongsa. We next camped for three days at Chendebeji (2,400 m), then moved on to Phobjikha from where we trekked to Khebetang (2,800 m) for a four day stay. We travelled to Punakha via Pele La, then up the Mo Chhu for a three day stay at Rimchu (1,350 m), trekking upstream to below Gasa (2,200 m) via Damji before returning to Thimphu. The first trek followed a trail from Nimshong to beyond Nobji and covered an elevational range of 900-1,500 m, with a low point of 700 m while crossing the Mangde Chhu. There was